

THE RUSSET



THE RUSSET 4 BEDROOM HOME

This four bedroom home has an en-suite to the main bedroom.

The dining room features a bay with French doors that open out on to the rear garden. In addition to a spacious lounge there is a cosy family room.

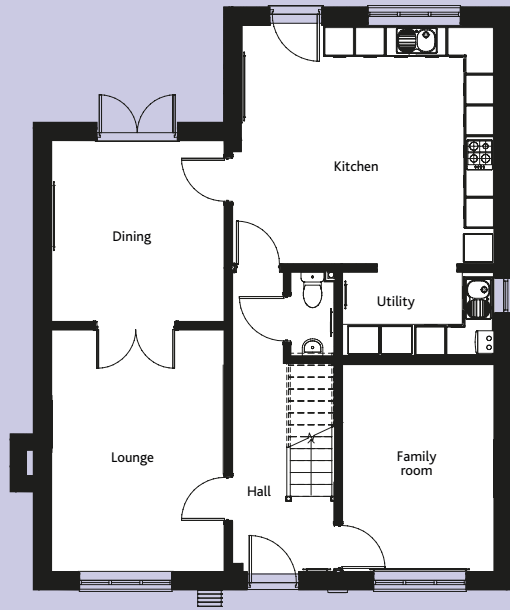
All plots have a utility area. There is a choice of high quality kitchens which include oven, chimney extractor fan and hob. The bathroom, en-suite and cloakroom all have specially selected white designer sanitaryware.

All remaining fixtures and fittings, from the panelled doors to the hardwood handrails on the stairs, have been carefully chosen to add the perfect finishing touches.

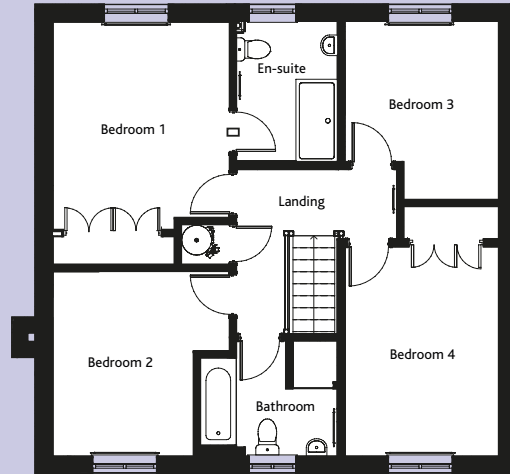
For further details ask at the Marketing Suite or contact one of our Sales Advisors.

BUILDING A SENSE OF PLACE
www.cannonkirk.co.uk


CANNON KIRK
homes



GROUND FLOOR



FIRST FLOOR

	mm	ft
GROUND FLOOR		
Lounge	4,742 x 3,394	15'6 x 11'1
Dining room	3,555 x 3,394	11'8 x 11'1
Kitchen/breakfast room	4,960 x 4,678	16'3 x 15'4
Utility	1,650 x 2,985	5'5 x 9'10
Family room	4,068 x 2,985	13'4 x 9'10
WC	1,650 x 850	5'5 x 2'10
FIRST FLOOR		
Bedroom 1	4,727 x 3,450	15'6 x 11'4
Bedroom 1 en-suite	1,983 x 2,682	6'6 x 8'10
Bedroom 2	3,541 x 3,421	11'7 x 11'2
Bedroom 3	3,465 x 2,989	11'4 x 9'10
Bedroom 4	4,080 x 2,998	13'4 x 9'10
Bathroom	2,245 x 2,674	7'4 x 8'8
GROSS INTERNAL FLOOR AREA: 157.66 sq m (1,698 sq ft)		



SCAN HERE
TO VIEW A
VIRTUAL TOUR

All room sizes are approximate and are generally measured between all wall finishes. All room dimensions include wardrobe recess where applicable. Some window positions may vary. These measurements should NOT be relied upon for purchasing carpets, appliances, furniture or any household items and should be construed as being a guide only to the actual finished room sizes. All purchasers must satisfy themselves as to the exact dimensions, layout and specifications of the property they intend to purchase. Please consult a Sales Advisor. This brochure does not constitute a part of any contract and is to be intended as a guide only as to the general specification and measurements of the property, and the general layout and nature of the development. The illustrations and photographs contained in this brochure are examples of Cannon Kirk house types and do not exactly reflect the houses at this development.

House specification subject to slight changes. Details available in the near future.

THE RUSSET 4 BEDROOM HOME

BUILDING A SENSE OF PLACE
www.cannonkirk.co.uk


CANNON KIRK
homes